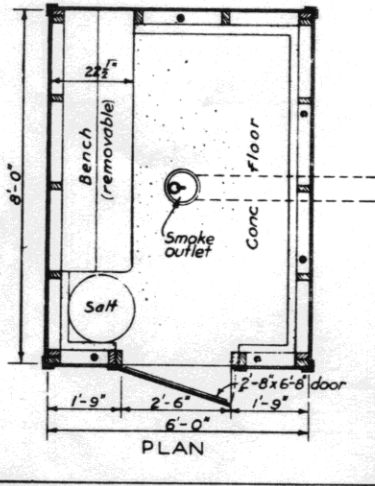


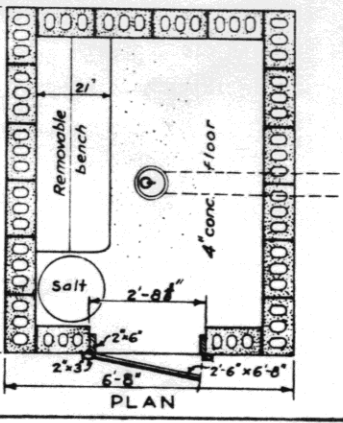
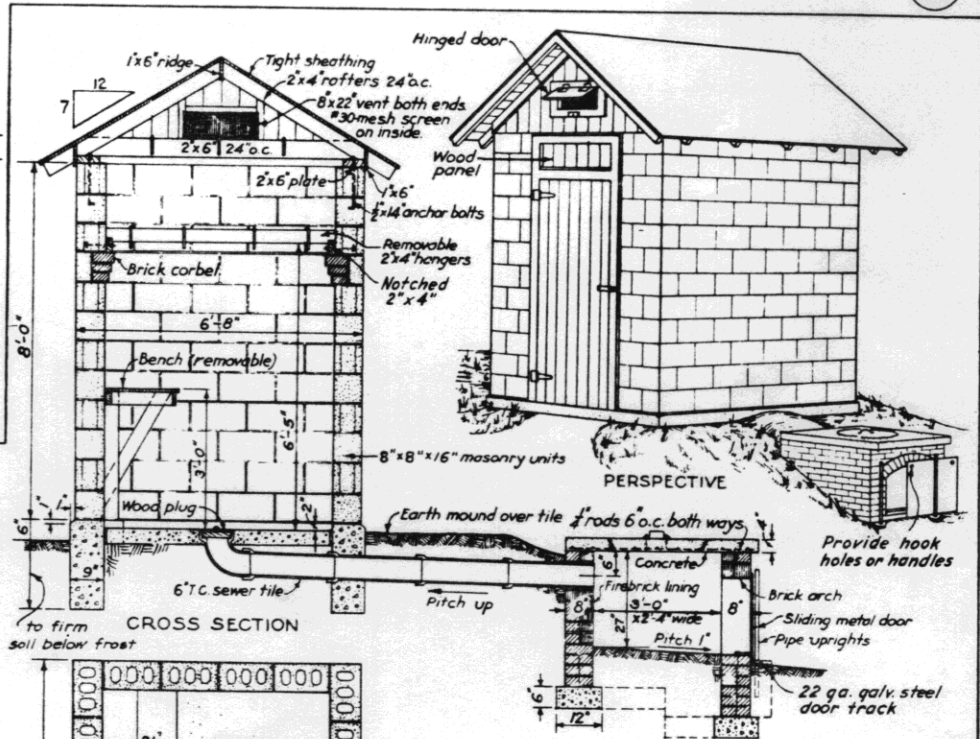
- BILL OF MATERIALS
SMOKEHOUSE**
- CONCRETE** 1:3:5 mix
10 bags cement, 1 cu yd sand, 1/2 cu yds gravel
- LUMBER**
3 pieces 2" x 6" x 6'-0" cross ties
3 " 2" x 4" x 12'-0" header, bench and hangers
12 " 2" x 4" x 10'-0" sills, studs, and rafters
23 " 2" x 4" x 8'-0" " " plates, and hangers
2 " 1" x 10" x 8'-0" bench and vent doors
2 " 1" x 6" x 10'-0" ridge and trim
2 " 1" x 6" x 7'-0" door battens
6 " 1" x 4" x 10'-0" corner boards and trim
6 " 1" x 4" x 8'-0" trim
6 " 1" x 6" x 7'-0" T & G boards for door
275 ft B.M. 6" drop siding
120 ft B.M. roof sheathing
Roofing or asphalt shingles to cover 100 sq. ft. roof area
- MISCELLANEOUS**
7-1/2" x 12" anchor bolts, with nuts and washers
1 pair 8" Tee hinges, 1 safety hasp
2-pair 2" x 2" hinges for vent doors
1-piece metal flashing-6" x 40"
4 lin. ft #30-mesh wire screen-10" wide
4 lengths 6" T.C. sewer pipe, 1-6" 90° T.C. elbow
Nails, hanging hooks, and paint not included

- FIREBOX**
- CONCRETE** 1:2:3 mix.
6 bags cement, 1/2 cu yd. sand, 1/2 cu yd. broken hard brick, gravel or stone, (brick more heat resistant)
- MISCELLANEOUS**
10 lin. ft. 6" x 6" No 9 wire fabric 30" wide
6 pieces 1/2" steel rods 42" long
10 " " " " 32" "
2 " 1/4" pipe 36" long
1-piece 24" x 32" metal, sliding door



**BILL OF MATERIALS
SMOKEHOUSE**

- CONCRETE AND MORTAR.**
Concrete 1:3:5 mix. Mortar 1:3 + 10% lime
14 bags cement, 1/2 cu yds sand, 2 cu yds gravel
65 lbs hydrated lime
- 142 8" x 8" x 16" smooth face masonry units.
12 8" x 4" x 16" " " " " " "
2 8" x 4" x 8" " " " " " "
14 8" x 8" x 8" " " half " " "
52 8" x 8" x 16" " " corner " " "
12 8" x 8" x 16" " " jamb " " "
12 8" x 8" x 8" " " half " " "
- 100 common brick
- LUMBER**
4 pieces 2" x 6" x 8'-0" plates and door jambs.
6 " 2" x 6" x 7'-0" " cross ties
6 " 2" x 4" x 10'-0" rafters, gable end studs
7 " 2" x 4" x 6'-0" bench and removable hangers
7 " 2" x 3" x 8'-0" door casing
5 " 1" x 6" x 10'-0" " battens, ridge, trim
5 " 1" x 4" x 10'-0" trim
1 " 1" x 12" x 6'-0" bench
1 " 1" x 10" x 10'-0" " and vent doors.
120 ft B.M. roof sheathing 56 ft B.M. 1 1/2" T16 door gables.
Roofing or asphalt shingles to cover 100 sq. ft. roof area
- MISCELLANEOUS**
8-1/2" x 14" anchor bolts 1 pr 8" Tee hinges 1 pr 2" x 2" hinges.
6 x 36" metal flashing. 4 lin. ft #30-mesh screen 10" wide
Nails, hanging hooks, and paint not included
- FIREBOX**
7 bags cement, 1/2 cu yd sand 1/2 cu yd gravel
450 common brick, 90 firebrick
9 1/2 steel rods 40" long. 6 1/2 steel rods 48" long.
2 pieces 1/4" pipe 36" long.
1 metal sliding door 24" x 32".



COOPERATIVE EXTENSION WORK IN
AGRICULTURE AND HOME ECONOMICS
STATE OF FLORIDA
UNIVERSITY OF FLORIDA
UNITED STATES DEPARTMENT OF AGRICULTURE COOPERATING

SMOKE HOUSE

USDA	EX. 5695	SHEET 1 OF 1
------	----------	--------------

EXT. ENGR. ENGINEER - GAINESVILLE, FLORIDA